

- |   |                                 |
|---|---------------------------------|
| A | Inlet                           |
| B | Impingement Baffling            |
| C | Coalescer Cartridge             |
| D | Separator Cartridge             |
| E | Outlet                          |
| F | Liquid Level Control Connection |
| G | Lower Drain Connection          |
| H | Upper Drain Connection          |
| I | Vent                            |

The Facet 3 AGB Series vertical housing permits easy access for inspection or change out of media. The baffle plates at the inlet remove a large amount of solid particulate matter and entrained liquids which are collected in the quiescent sump. The large sump area also provides for slug control. Use of the impingement baffle permits coalescer cartridges to function more efficiently in the removal of microscopic solids and the fine liquid entrainment.

## OPERATION

Gas stream enter housing at point (A). Through the use of baffling at point (B), impingement of solid particulate matter occurs. A certain amount of liquid entrainment will drop out with solids and collect in quiescent sump. Mist and minute solids will flow upwards and enter coalescer cartridges, points (C). Oil mist particles will be coalesced and solid particulate matter will be removed. Gas stream will flow from inside-out. Coalesced droplets will be repelled by specially treated separator cartridges, point (D). Liquid will fall to bottom. An upper drain connection is available for this liquid to be removed at point (H). Gas stream will flow through separator cartridges (D) outside-in, and on through internal piping to outlet point (E).

## STANDARD HOUSING DESIGN

- Body: Welded carbon steel construction
- ASME Code, Section VIII, Div. 1, stamped and certified
- Designed for 150 psi (10.5 kg/cm<sup>2</sup>) @ 250°F
- Exterior: Prime coated
- Swing bolt head closures
- Head-Gasket: Buna-N o-ring — other materials available by request
- Headlift furnished on 20" (508 mm) OD and larger

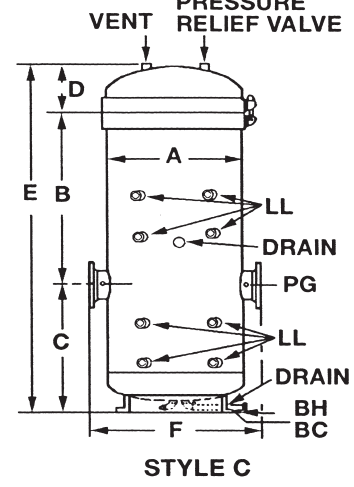
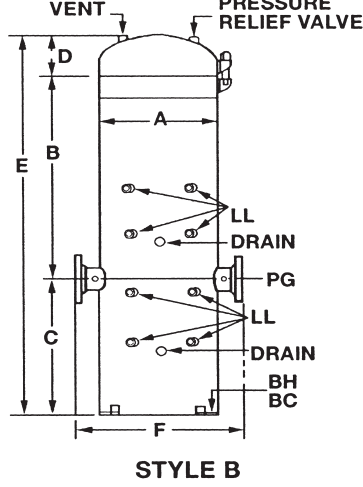
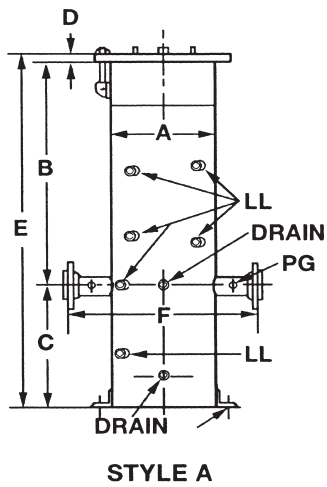
## STANDARD CONNECTIONS

- Inlet and outlet: 150#RF (ANSI) flanged
- All other connections are 3000# NPT couplings

## OPTIONS

- Differential pressure gauge
- Automatic drain valves
- Liquid level gauge

*Due to our continuing program of improvement, specifications are subject to change without notice.*



MODEL NUMBER <sup>1</sup>	HOUSING STYLE	NPT CONNECTIONS		
		LL <sup>2</sup>	PG	DRAIN
3AGB-102-213-2B	A	3/4"	1/4"	3/4"
3AGB-163-128-114	A	3/4"	1/8"	3/4"
3AGB-204-328-211	B	3/4"	1/8"	3/4"

MODEL NUMBER <sup>1</sup>	HOUSING STYLE	NPT CONNECTIONS		
		LL <sup>2</sup>	PG	DRAIN
3AGB-286-628-411	C	3/4"	1/8"	1"
3AGB-368-1228-811	C	3/4"	1/8"	3/4"

<sup>1</sup> All models except 3AGB-102-213-2B and 3AGB-163-128-114 include headlift assemblies.

<sup>2</sup> Can be used for liquid level gauge or liquid control connections located on 9/2" centers

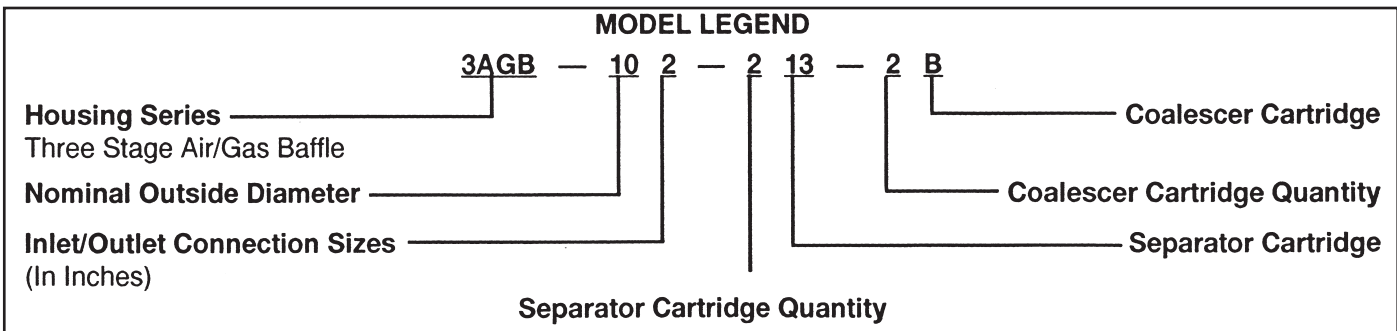
**DIMENSIONS** (All dimensions are approximate and are for estimating purpose only)

MODEL	INLET/ OUTLET	DIMENSIONS												ANCHOR				
		A		B		C		D		E		F		BH		BC		
		in.	mm.	in.	mm.	in.	mm.	in.	mm.	in.	mm.	in.	mm.	in.	mm.	in.	mm.	
3AGB-102-213-2B	2	51	10 <sup>3</sup> / <sub>4</sub>	273	27 <sup>3</sup> / <sub>16</sub>	691	14 <sup>13</sup> / <sub>16</sub>	376	1	25	43	1092	20	508	5/8	16	13 <sup>1</sup> / <sub>4</sub>	337
3AGB-163-128-114	3	76	16	406	41	1041	16	406	1	25	58	1473	24	610	7/8	22	19	483
3AGB-204-328-211	4	102	20	508	38 <sup>1</sup> / <sub>2</sub>	978	18	457	7 <sup>7</sup> / <sub>16</sub>	192	64 <sup>1</sup> / <sub>16</sub>	1627	28	711	7/8	22	23	584
3AGB-286-628-411	6	152	28	711	42	1067	30	762	9 <sup>5</sup> / <sub>8</sub>	244	81 <sup>5</sup> / <sub>8</sub>	2073	36	914	7/8	22	23	584
3AGB-368-1228-811	8	203	36	914	45 <sup>7</sup> / <sub>16</sub>	1154	31	787	11 <sup>3</sup> / <sub>4</sub>	298	88 <sup>3</sup> / <sub>16</sub>	2240	44	1118	1 <sup>1</sup> / <sub>8</sub>	29	41	1041

**REFERENCE TABLE FOR SIZING** (For Estimates Only)

MODEL NUMBER	OPERATING PRESSURE (PSIG)								
	50	100	150	200	250	300	350	400	500
3AGB-102-213-2B	280	390	480	585	635	695	760	825	915
3AGB-163-128-114	855	1195	1475	1805	1955	2145	2345	2545	2820
3AGB-204-328-211	2055	2870	3540	4335	4695	5145	5635	6105	6770
3AGB-286-628-411	4115	5740	7080	8665	9390	10290	11265	12205	13540
3AGB-368-1228-811	8230	11485	14155	17330	18775	20585	22530	24410	27085

MAXIMUM FLOW RATE [SCFM-AIR @ 60°F and 2 PSID]



Due to our continuing program of improvement, specifications are subject to change without notice.