

**ELIMINATE THE NEED FOR OTHER WATER DEFENSE DEVICES AND RECEIVE MAXIMUM WATER REMOVAL, SOLIDS HOLDING CAPACITY AND SHUTDOWN PROTECTION TO ASSURE CLEAN, DRY FUEL DELIVERY WHILE MEETING THE LATEST INSTITUTE OF PETROLEUM (I.P.) SPECIFICATION**

The Facet VFGM Series SuperFlex monitor housings, equipped with FG-O Series 6" (152 mm.) OD monitor cartridges, continually check for the entire flow of fuel, not just mere samples, for water or solids contamination. By performing three jobs, the monitors assure clean, dry fuel. They absorb free and

emulsified water, remove ultra-fine solids, and shut down system flow when hit with a localized slug of water. They are designed to flow from the outside to inside at a rate of 4 gallons (15.14 liters) per inch of length.

Facet's VFGM Series SuperFlex monitor housings are built to ASME Code, constructed of carbon steel. Stainless steel construction is available. Contact your Facet Representative for details. They are furnished with FG-O Series 6" monitor cartridges that meet the latest edition of Institute of Petroleum (I.P.) Specifications and Qualification Procedures—Aviation Fuel Filter Monitors With Absorbent Type Elements.

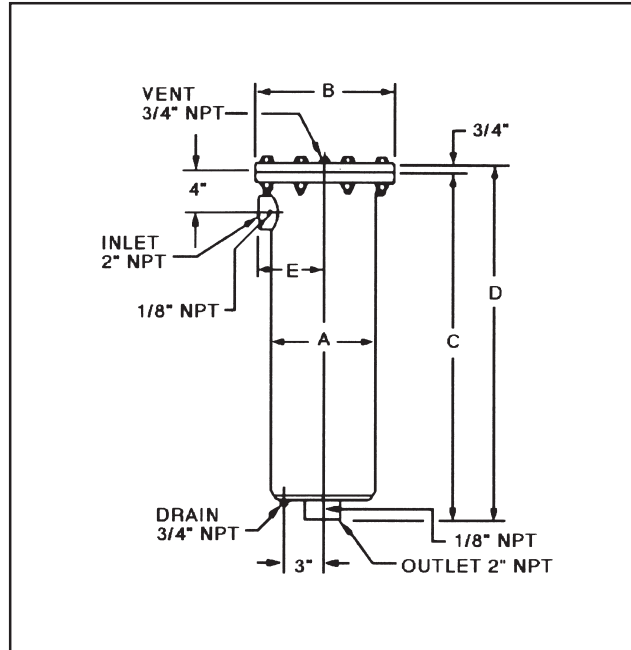
### STANDARD HOUSING DESIGN

- Welded carbon steel construction
- ASME Code, Section VIII construction, stamped and certified
- Design pressure: 250 psi @ 250°F
- Main closure: Blind flange
- Head gasket: Buna-N—other materials available on request
- Vent connection: 3/4" NPT
- Drain connection: 3/4" 3000# NPT
- Inlet and outlet connections: 2" 3000# NPT
- Differential pressure gauge connection: 1/8" NPT
- Interior: Epoxy coated
- Exterior: Prime coated

### OPTIONS

- Air eliminator
- Air eliminator check valve
- Manual drain valve
- Pressure gauge assembly
- Pressure relief valve
- Sampling probe
- Adjustable support stand

*Due to our continuing program of improvement, specifications are subject to change without notice.*



**HOUSING DATA**

MODEL NUMBER	FLOW RATE		A		B		C		D		E		WEIGHT		LIQUID VOLUME	
	gpm	lpm	in.	mm.	in.	mm.	in.	mm.	in.	mm.	in.	mm.	lbs.	kgs.	gals.	ltrs.
VFGM-1C-1614	58	220	8 <sup>5</sup> / <sub>8</sub>	219	11 <sup>5</sup> / <sub>8</sub>	295	31	787	31 <sup>3</sup> / <sub>4</sub>	806	5 <sup>1</sup> / <sub>2</sub>	140	110	50	7	26
VFGM-2C-1629	116	439	8 <sup>5</sup> / <sub>8</sub>	219	11 <sup>5</sup> / <sub>8</sub>	295	45 <sup>1</sup> / <sub>2</sub>	1155	46 <sup>1</sup> / <sub>4</sub>	1175	5 <sup>1</sup> / <sub>2</sub>	140	125	57	10	38
VFGM-3C-1643	174	659	8 <sup>5</sup> / <sub>8</sub>	219	11 <sup>5</sup> / <sub>8</sub>	295	59 <sup>1</sup> / <sub>2</sub>	1511	60 <sup>1</sup> / <sub>4</sub>	1530	5 <sup>1</sup> / <sub>2</sub>	140	151	68	13	49

Model numbers include housing, cartridge mounting hardware, and cartridges not installed.  
All dimensions, weights and volumes are for estimating only.

*Due to our continuing program of improvement, specifications are subject to change without notice.*